



**REGIONAL SPECIALISED METEOROLOGICAL CENTRE-TROPICAL CYCLONES, NEW DELHI  
TROPICAL WEATHER OUTLOOK**

---

**DEMS-RSMC TROPICAL CYCLONES NEW DELHI DATED 05.10.2020**

**TROPICAL WEATHER OUTLOOK FOR NORTH INDIAN OCEAN (THE BAY OF BENGAL AND ARABIAN SEA) VALID FOR NEXT 120 HOURS ISSUED AT 0600 UTC OF 05.10.2020 BASED ON 0300 UTC OF 05.10.2020 .**

**BAY OF BENGAL:**

1. YESTERDAY'S, LOW PRESSURE AREA OVER NORTHWEST BAY OF BENGAL (BOB) AND ADJOINING ODISHA COAST PERSISTED OVER THE SAME REGION AT 0300 UTC OF TODAY, THE 05<sup>TH</sup> OCTOBER 2020.

AS PER SATELLITE IMAGERY, AT 0300 UTC OF TODAY, THE 5<sup>TH</sup> OCTOBER SCATTERED LOW AND MEDIUM CLOUDS WITH EMBEDDED INTENSE TO VERY INTENSE CONVECTION OVER NORTH AND CENTRAL BOB. SCATTERED LOW AND MEDIUM CLOUDS WITH EMBEDDED INTENSE TO VERY INTENSE CONVECTION OVER SOUTH BOB AND ANDAMAN SEA.

2. A FRESH LOW PRESSURE AREA IS VERY LIKELY TO FORM OVER NORTH ANDAMAN SEA AND ADJOINING EAST-CENTRAL BOB AROUND 9<sup>TH</sup> OCTOBER. IT IS VERY LIKELY TO MOVE NORTHWESTWARDS TOWARDS NORTH ANDHRA PRADESH AND ODISHA COAST WITH GRADUAL INTENSIFICATION INTO A DEPRESSION DURING SUBSEQUENT TWO DAYS.

**PROBABILITY OF CYCLOGENESIS DURING NEXT 120 HRS:**

24 HOURS	24-48 HOURS	48-72 HOURS	72-96 HOURS	96-120 HOURS
NIL	NIL	NIL	NIL	LOW

**ARABIAN SEA:**


SCATTERED LOW AND MEDIUM CLOUDS WITH EMBEDDED MODERATE TO INTENSE CONVECTION OVER EC & EXTREME SOUTH-CENTRAL ARABIAN SEA. SCATTERED LOW AND MEDIUM CLOUDS WITH EMBEDDED WEAK TO MODERATE CONVECTION OVER REST OF SOUTH ARABIAN SEA.

**PROBABILITY OF CYCLOGENESIS DURING NEXT 120 HRS :**

24 HOURS	24-48 HOURS	48-72 HOURS	72-96 HOURS	96-120 HOURS
NIL	NIL	NIL	NIL	NIL

---

PROBABILITY OF CYCLOGENESIS (FORMATION OF DEPRESSION): NIL: 0%, LOW: 1-25%, FAIR: 26-50%, MODERATE: 51-75% AND HIGH: 76-100%

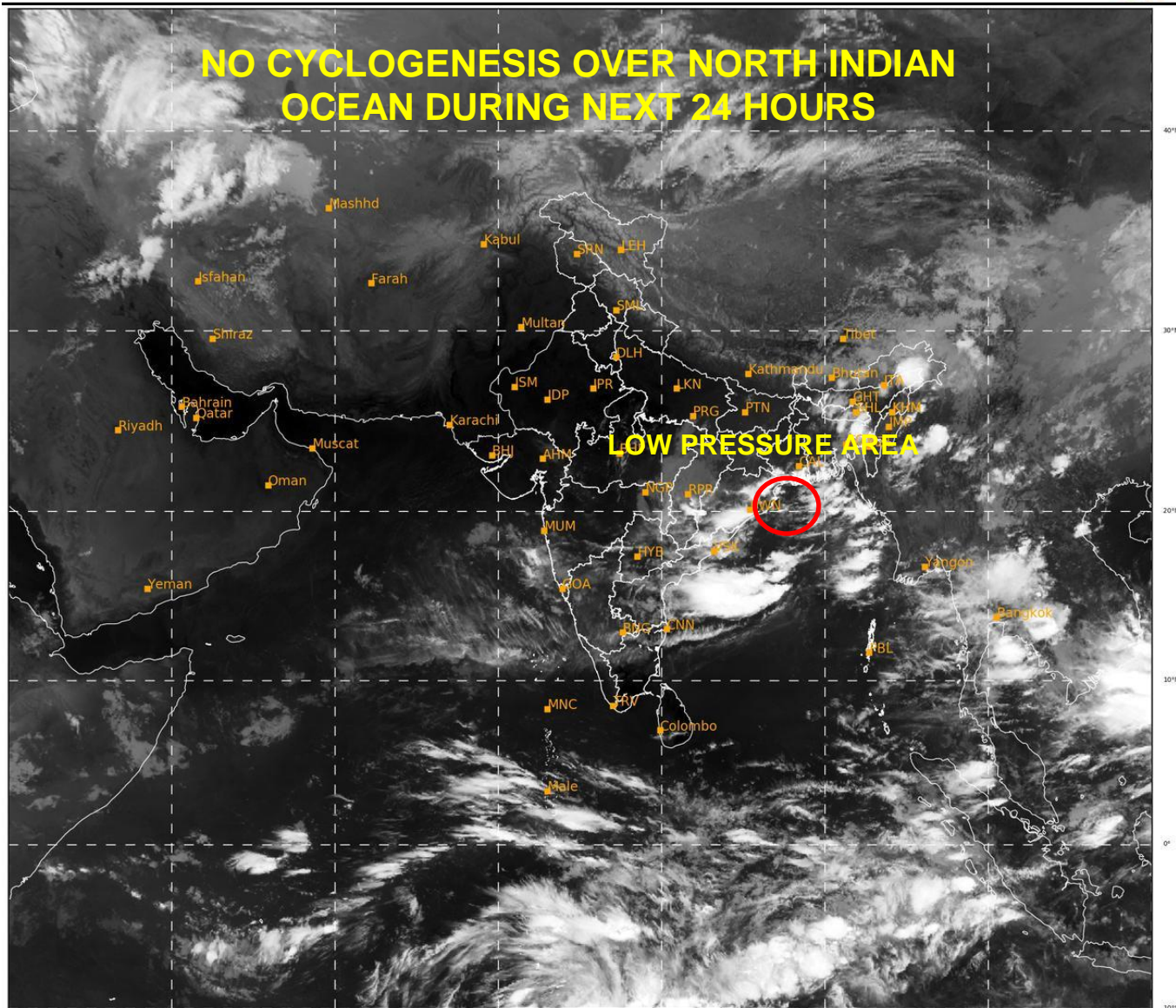
 This is a guidance Bulletin for the WMO/ESCAP Panel Member countries,. Please visit respective National websites for Country specific Bulletins

**REMARKS:**

MOST OF THE MODELS INCLUDING IMD GFS, NCEP GFS, GEFS, ECMWF AND NEPS ARE INDICATING DEVELOPMENT OF A FRESH LOW PRESSURE AREA OVER NORTH ANDAMAN SEA AND ADJOINING EAST-CENTRAL BOB AROUND 9<sup>TH</sup> OCTOBER WITH NORTHWESTWARDS MOVEMENT TOWARDS NORTH ANDHRA PRADESH AND ODISHA COAST AND GRADUAL INTENSIFICATION INTO A DEPRESSION DURING SUBSEQUENT TWO DAYS. THE GENESIS POTENTIAL PARAMETER INDEX IS ALSO INDICATING POTENTIAL ZONE FOR CYCLOGENESIS OVER NORTH ANDAMAN SEA AND ADJOINING CENTRAL BOB DURING 9<sup>TH</sup> – 10<sup>TH</sup> OCTOBER.

SAT : INSAT-3D IMG  
IMG\_TIR1 10.8 um  
L1C Mercator

05-10-2020/(0300 to 0327) GMT  
05-10-2020/(0830 to 0857) IST



461

938

IMD,DELHI

PROBABILITY OF CYCLOGENESIS (FORMATION OF DEPRESSION):NIL: 0%, LOW: 1-25%, FAIR: 26-50%, MODERATE: 51-75% AND HIGH: 76-100%

This is a guidance Bulletin for the WMO/ESCAP Panel Member countries,. Please visit respective National websites for Country specific Bulletins